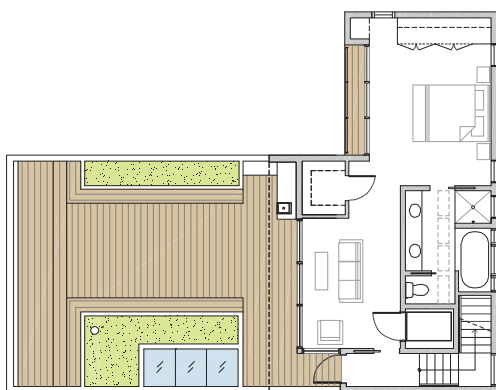
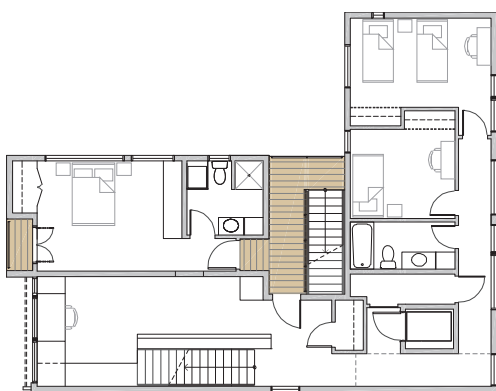




01



02



03



04

JETTY HOUSE

The house turns a second-row beach lot into oceanfront property with an elongated structure pushed to one side of the lot that captures views between two houses across the street. Inspired by the beach jetties, the linear body is used like a camera lens to foreshorten the viewing distance. The design breaks with the neighborhood's ubiquitous built-on decks and pitched roofs by treating the roof as valuable real estate, and using negative space to carve out balconies shielding the interior from the summer sun. Selectively placed windows on the east and west walls reinforce telescopic views while providing complete privacy.

01 Exterior view by night 02 View from roof deck to ocean front 03 Floor plans 04 Living space 05 East and west façade

Photos: Richard Leo Johnson



05

CITY
Folly Beach (SC)

COUNTRY
USA

REGION
North America

TPOLOGY
Living

COMPLETION
2006

WEBSITE
www.cubework.com

ARCHITECTS
CUBE